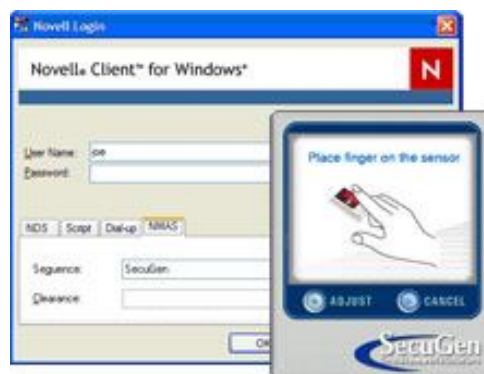


SecuGen Enterprise NMAS® Login Method

v2.2

SecuGen Enterprise NMAS Login Method is a powerful and secure login method for Novell Modular Authentication Service (NMAS) based on SecuGen's fingerprint technology.

You can increase the security of information and resources in your network by requiring users to *prove who they are* using the most popular biometric identifier: their fingerprint. Unlike passwords, cards or tokens, fingerprints cannot be lost, forgotten, misplaced or stolen.



What's Included

Login Server Method	Server software that authenticates users logging into eDirectory by comparing their fingerprints with their enrolled fingerprints in the directory using SecuGen's matching algorithms.
Login Client Method	Client software that allows SecuGen fingerprint readers to communicate with the Novell Client for fingerprint login.
Admin Tools	Administrators use the SecuGen snap-in to ConsoleOne to enroll, maintain or delete* user fingerprint data. Provided Diagnostic Tool* determines if a user's fingerprint data already exists in the directory.

Features

Easy to use fingerprints	Enroll fingers and logon with one touch - via SecuGen's user-friendly graphical interface wizards.
Supports multiple fingers	Enroll up to ten (10) fingers to ensure that finger injuries won't block access by authorized users.
Flexible registration	Administrators can choose to provide monitored or self-registration* of user fingerprints.
Powerful security	Administrators can set two types of Security Thresholds* in ConsoleOne. The higher of either one is applied at logon. - System-Wide Security Threshold - Individual User Security Threshold
No new training needed	Administration of all fingerprint profiles are managed through the existing ConsoleOne utility that manages all network resources. There are no new administrative tools or interfaces to learn beyond simple fingerprint enrollment procedures.

About NMAS

NMAS is an authentication framework that manages a variety of methods for users to authenticate themselves to eDirectory. Using NMAS, administrators can flexibly integrate and deploy a combination of authentication methods, including biometrics, smart cards, proximity cards, tokens and digital certificates, to meet the various security needs within an organization.

About ConsoleOne

ConsoleOne® is a single point of administration for NMAS, eDirectory and other network resources. ConsoleOne manages all user accounts and administers user rights through a user-friendly interface, running on either a Windows workstation or a NetWare® server.

Supported Fingerprint Readers

- Hamster III
- Keyboard III
- OptiMouse III

* New in version 2.2

Benefits of SecuGen Enterprise NMAS Login Method

- Very easy, convenient and intuitive to login with fingerprints
 - Protects network access more securely than passwords alone
 - Reduces administrative overhead for password resets. Fingerprints cannot be lost or forgotten.
 - Combines well with other authentication methods for multi-layered security
 - SecuGen's years of refinement to fingerprint sensors and algorithms provide a high level of accuracy and reliability
 - Integrates seamlessly with existing Novell infrastructure without the hassle of development or coding
 - Suitable for organizations of all sizes and expandable as needed
-

System Requirements

Novell Netware Server Requirements

- NetWare 6.5 SP3 or later
- Novell eDirectory 8.7.3.5 or later
- ConsoleOne v1.3.6 or later
- NICI v1.5 (included in NMAS Enterprise Edition) or later
- Novell Certificate Server v2.0 (included in NMAS Enterprise Edition) or later
- Administrative rights to [root] on the NetWare 6.5 server where NMAS is installed

Windows Server Requirements

- Windows XP or Windows 2000 SP4 and an assigned IP address
- Novell eDirectory 8.7.3.5 or later
- Pentium class PC with minimum 64 MB RAM (128 recommended)
- (Optional) One or more workstations running Novell Client for Windows v4.90.0.0 SP1 or later
- Administrative rights to Windows PC and to all portions of the NDS tree that contain domain enabled User objects.

Linux Server Requirements

- SUSE Linux Enterprise Server 9 or later
- Novell eDirectory 8.7.3.5 or later

ConsoleOne v1.3.6 Requirements

- 200 MHz or faster processor with minimum 64 MB RAM (128 recommended) running either
 - * NetWare 6.5 SP3 or later, or
 - * Windows XP or Windows 2000 SP4 with Novell Client 4.9 SP1a or later
- 37 MB disk space and screen resolution of at least 800 x 800

Client Requirements

- Windows XP or Windows 2000 SP4
- Novell Client for Windows v4.90.0.0 SP1 or later
- NICI v1.5 (included in NMAS Enterprise Edition) or later
- Available USB port for SecuGen peripherals

How to Buy

Starter Packs include Server and Client software plus 10 User Licenses. You may purchase additional User Licenses as needed. Contact us at www.secugen.com.